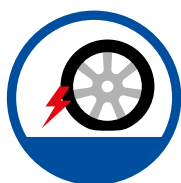


PROFIMAT[®] wheelprotect XL



Advantages & properties



Protection of tires from standing plates



Two-sided ramp aid



Permanently elastic



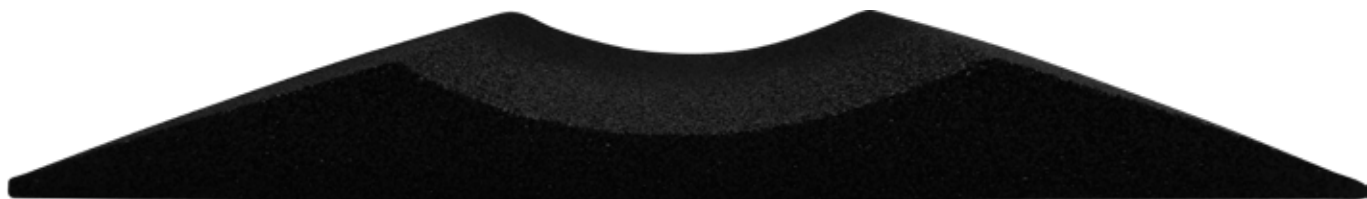
Highly resistant, durable material



Frost and weather resistant

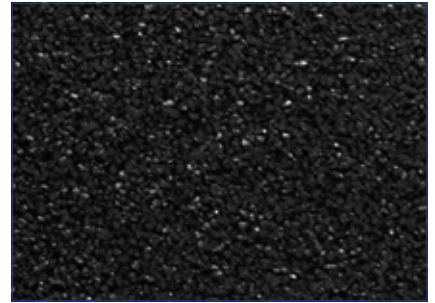
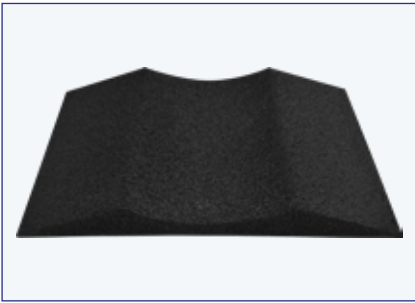


Sustainable raw materials



This data sheet is not subject to any updating service! All information is provided without guarantee. The current, valid version is available at www.profimat.com

PROFIMAT® wheelprotect XL – data sheet



Application

PROFIMAT® wheelprotect XL is an elastic protection pad that can protect tyres (18-22 inch) from flat spots. Due to its elasticity the tyre pad adapts itself to the tyre and offers an optimal contact surface. The product is equipped with a drive-on aid at the front and rear to ensure easy positioning of the vehicle. Due to its special shape, weight and anti-slip effect, the product remains in the intended position. A prefabricated parting line on the back makes it possible to cut PROFIMAT® wheelprotect XL in half using a cutter knife or jigsaw for even more flexible use. PROFIMAT® wheelprotect XL can be used throughout the year.

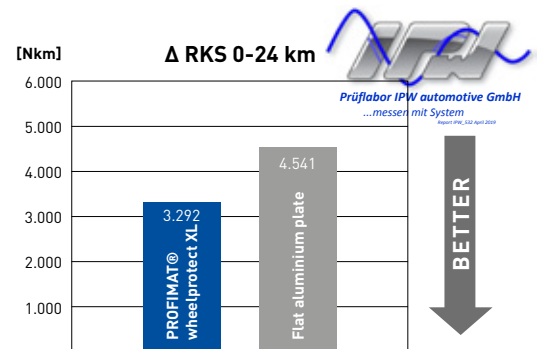
The suitability of the surface must be checked if necessary.

Material

recycled rubber granules (typical rubber scent possible) bonded with polyurethane.

Summary of the IPW Report 532

The flat spot investigation carried out on a single reference tyre in comparison with a reference tyre on a single comparison object clearly confirmed the client's thesis in the selected test configuration: The tyre liner „PROFIMAT® wheelprotect XL“ has contributed to reducing the intensity of the dynamic force variation by more than 25%.



This data sheet is not subject to any updating service! All information is provided without guarantee. The current, valid version is available at www.profimat.com

Product design		
Colours	black	
Surface	granule structure	

Dimensions / Tolerance		
Length x Width	600 x 400 mm (approved, IPW report 532) 600 x 200 mm (available on request)	± 1.5 %
Height	65 mm	± 0.6 mm
Weight	approx. 7.1 kg/unit approx. 3.55 kg/unit (with central separation)	

This data sheet is not subject to any updating service! All information is provided without guarantee.
The current, valid version is available at www.profimat.com