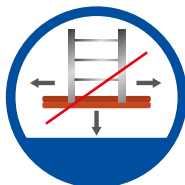


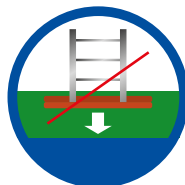
PROFIMAT[®] Ladder Safety Mat 750 x 250 x 50/25 mm



Advantages & properties



Prevents the ladder from slipping



Prevents sinking into lawn & earth



Protects parquet, laminate, tiles, roofing membrane



Highly resistant, durable material



Frost and weather resistant

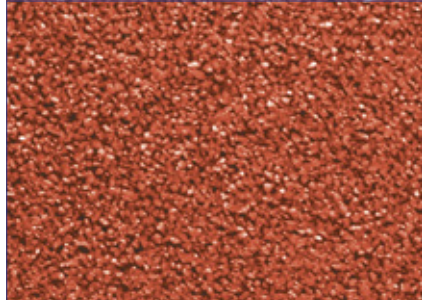


Sustainable raw materials

This data sheet is not subject to any alteration service! All information is provided without guarantee. The current, valid version is available at www.profimat.com

page 1 of 2

PROFIMAT[®] Ladder safety mat – technical data sheet



Purpose

The PROFIMAT[®] Ladder safety mat is a ladder accessory for ladders/plant ladders, which is easy to handle due to its ergonomic design. It is equally suitable for indoor and outdoor use. Due to the granular structure of the surface it has a high coefficient of friction and thus, when used correctly, ensures that the ladders stand securely and prevents slipping on uneven and loose surfaces. When used indoors, it also protects floors and surfaces. The red colouring has a signal effect and reduces the risk of overlooking the mat.

Material

recycled rubber granules; polyurethane binder

Product design		
Colour	red, slight colour differences and bleachings cannot be avoided	
Surface	granular structure, bevelled edges	
Bottom	smooth with integrated profile channels	

Dimensions / Tolerances		
length x width	750 x 250 mm	± 1.5 %
thickness	25/50 mm	± 0.6 mm
weight	5.2 kg	

Product testing		
Durability	conditionally resistant to acids and alkalis, saltwater resistance tested	self-verification DIN EN ISO 175, DIN EN ISO 3386-2
Fire resistance	E _{fl} / E	EN 13501-1:2010

This data sheet is not subject to any alteration service! All information is provided without guarantee. The current, valid version is available at www.profimat.com